

G-LO 020

## The potential beauty of the Batang Hari River in Jambi province: An idea for a Stilt House Building of Mega Structure

Dr Wilhelmus Hary Susilo, IAI & Ir Siti Sujatini MSI

Program Studi Arsitektur, PT Universitas Persada Indonesia YAI, Jakarta, Indonesia

herry\_susilo@ptpsia.com

### ABSTRACT

A city with potential for River's width has a lot of potential and challenges in urban development. The orientation of the city development toward the river has its own unique. For that analysis urban linkage can developed with attention to linkages between views and linkages have circulations location as a place of gathering of the potential city community in conducting its activities. The river has a very unique scenic and peaceful, for it can be made into the area with the orientation that have the character of the region. The stilt house which has the unique character of the Jambi region can be a sustainable tourism potential.

© 2013 Genius LocI/TAUINA Makassar. All rights reserved.

Key words: river, orientation, urban linkage, views, circulation, new stilt house of mega structure

### 1. Background

Waterfront development is the concept of regional development banks the water be it beach, river or lake. The sense waterfront in Indonesian language literally is a seaside area, part of the city bordering the water. The city of Jambi has a river that divides the one with other regions have a very unique character to be investigated further. The potential that can be dug up will be very large, given the orientation of the development of the city can be directed at the activities that use the river as a function of the transport sector and has the potential economic value are priceless. Community gathering centers can be a potential urban development have a high economic value, such as trading centers along the River, the culinary Center's typical city, parks and public open spaces that are oriented toward the view of the river eksotik. The center of batik and existence of distinctive stilt home Jambi province which has the uniqueness of the high. To be able to increase revenue income area of Jambi province, one of its aspects is the opening of a new tourist destination (Breen 1985: 17), by exploiting the potential of cultural and social community around the River, so the implications of value added income from the community around the River will be increased. This phenomenon can be seen in the figure below at figure 1:



Source: (Susilo, 2012)

Figure 1: The potential banks area of Sungai Batang Hari at Kota Jambi

It needs the study of connectedness views and circulation will be able to add economic value for the people of the city of Jambi. Problem formulation based on the explanation on the background of the issues and facts early observations, then set the formulation issues as follows: (1) how to find the facts that occurred regarding the environmental impacts that occur, on the area of the River waterfronts in the town of Jambi?, (2) how to analyze the elements of the development area in the city of Jambi River waterfronts?, (3) how to analyze the relationship of the residential still home with elements of the development of the banks of the River in the city of Jambi? (4) how to analyze how the views and the interconnectedness of the circulation which can increase the potential of tourism of the city of Jambi that sustainable?

Research purposes relating to the above phenomena then specified research objectives as follows: (1) Find the facts that occurred regarding the environmental impacts that occur, on the area of the River waterfronts in the town of Jambi, (2) analyze the elements of the development of the River waterfronts in the town of Jambi, (3) analyze the relation of residential district still home with elements of the development of the banks of the River in the town of Jambi. (4) analyze the relation view of interconnectedness and poor circulation can enhance the potential of tourism of the city of Jambi. Next on the outer-open space on the banks of the River, it can be used optimally by hikers and for socializing in public facilities as well as convenience for the public and tourists who were enjoying the scenic beauty of the river's width, it will be interrupted when the settings are and the process of its construction is not effective. This can reduce the sense of comfort and society will be disrupted by the presence of a very tight control of land, so that the public is difficult activity from one area to another area.

## 2. Literature Review

The cornerstone of the theory of the river bank is a recreational area that is priceless in this world (Gallon, 1994: 118). Furthermore, according to Torre (1989), elements that support the success of the project on waterfronts include: (1) Thematic Area Waterfronts, (2) the level of authenticity of the Area waterfronts, (3) the functions and activities, (4) the public perception, (5) the appropriateness of the financial aspects, (6) the feasibility and approval of environmental impact, (7) Construction Technology, (8) effective management. Then Richardson (2001) identify premisses and buildings illustrate the special attention to be able to reflect by way of inspiration through the analogy of building.

*"It instead describe their intention to reflect by "analogous inspiration" the characteristics of local buildings, their scale in particular, whether they have chosen to concentrate on the use of materials, the landscape, the local culture or even no more than the idea of continuity with the past" (Richardson, 2001:6).*

To be able to shape the characteristics and to the building can be unique through several architectural aspects include; the proportions of construction materials and structures, scale and rhythm affects the formation of the characteristics in a building (Ching, 1984), this can be used to analyze the existence of building houses the stage along the Batang Hari River, particularly around the city of Jambi. So a building at designated areas will have unique characteristics, as well as residential buildings, located on the shores of the River will have unique characteristics. Subsequently the concept of new according to Vernacular Architecture (2001 Richardson) include: (1) the discovery of traditional elements, (2). Material engineering and building materials, (3) Form that can provide Identity building, (4) building with outer space.

On the project Cultural Bridge by Michel Graves, which combines the idea of two cities and the concept of cultural centre contains the image of a very strong symbolic unification (Ikhwanuddin, 2005: 57). This allows the applied to the building which lies on the River, with the use of high technology, so that one town will have an icon in the area that is most important as a center of the orientation of a city. The criteria on the application of a plan in which has an amazing unity on the group affected by the design of the linkages include; and treat the path entry (circulation), the space between the outside of the building, spatial, visual silhouette of a row of buildings, distance of buildings on the site of the road, the proportion, the shape of the building material, texture, shadow patterns that are formed, the scale of buildings and architectural styles are applied. (Hedman, 1984: 14)

## 3. Methodology

The method of this research is carried out, by means of qualitative stages: field observation and documentation. The method of observation is done with the data collection carried out systematically on a way of life, as well as a variety of social events, a variety of cultural objects of a society (Bungin 2004: 57). Field observations performed with touring the area on the banks of

the River stems from the downtown area of Jambi towards the opposite side of the river which has the function of a unique neighborhood where the building lot has authenticity in the form of home staging and non-pollutant industries the street of K.H.M. Jafar Mudung, Mudung Laut dan Kecamatan Danau Teluk, subdistrict of Tanjung Raden. Further documentation on doing on 2 sides of the area across the River to be able to see the State and potential of the interconnectedness of the views and the interconnectedness of human circulatory in carrying out its activities.

#### 4. Result and Discussions

The facts that occurred regarding the environmental impacts that occur, on the area of the Batang Hari River waterfronts in the town of Jambi. A natural phenomenon which successfully observed is the flow of the River is wide enough with having beautiful scenery can be potential as the center of a city orientation. The level of popular culture that has awareness of maintaining the cleanliness of the water of the River, where the river becomes a part of life and everyday activities, will be very large its impact both in environmental, social and economic value for an increase in welfare of society around the Batang Hari River. From the results of observation and documentation activities performed can be seen in the image figure 2 below:



Source: (Sudis, 2012)

Figure2: Observation that can be seen on the situation

To avoid damage to the environment by the river and it was the necessary existence of a study of system structure of an environmentally friendly construction, so that the buildings will be built around the River may still keep the ecological balance of the river and the utilization of the potential of the River as the orientation of the construction of new buildings can take place with good and sustainable. Elements of the development of the region. Elements of the development of the Batang Hari River waterfronts in Jambi city include: Thematic Area Waterfronts the Batang Hari, based on an assessment that can be seen is raising the potential value of Regional Architecture. This will increase the power of regional identities can significantly, so that the character will be very strong, that can be seen at figure 3 below:



Source: (Sudis, 2012)

Figure 3: Thematic Area Waterfronts Sungai Batang Hari with Jambi Regional Architecture

With the theme, which raised the values of local regional, is expected to be a unique attraction in excursions of tourists with a segment of cultural tourism visits. The main tourist destinations are to be promoted more widely to be able to increase the communication aspect of travelers with extended information widely. The level of authenticity of the Area waterfronts, by maintaining the potential of the Batang Hari River has a width, with construction on the banks of the river that does not damage the banks of a river, can maintain the authenticity of nature and the environment are maintained properly. For it can continue to be maintained and in case, so that the sustainability of the natural conditions of original can continue to progress well, that can be seen at figure 4:



Source: (Sasilo, 2012)

Figure 4: An authenticity of the Area waterfronts Sungai Batang Hari

On the part of the less good, the program of greening and retaining the banks of the River, so that the strength of the ground around the banks of the river can be maintained properly. The functions and activities, on the banks of the many surrounding communities with business activities and trade and socialise citizens. This will increase the earning potential economically for the citizens around the banks of the River Batang Hari. Riverside fish farm activity can also make the potential for increased economic value, for the community around the banks of the River as well as the residential function. The situation area can be seen at figure 5 below:



Source: (Sasilo 2012)

Figure 5: Urban area at Sungai Batang Hari Jambi that have mix use

#### Stilt Home Area.

The Stilt Home residential area relationship with elements of the development of the banks of the River in the town of Jambi, can be affected by the existence of, the planning and development program and the stilt home environment s that has its own uniqueness, the development of home-based micro-industry, marketing special area and potential local batik industry, promotion area with local cultural values and the development of human resources in the area of stilt home. The urban area of stilt house in Jambi can be seen at figure 6 below:



Source: (Sudlo 2012)

Figure 6: The urban area of still house in Jambi

#### Design linkages

Linkages view of silhouette on the building and establish linkages in circulation at urban planning will be able to enhance the tourism potential of Jambi. Spatial patterns between the opposite side of the River on both banks can unite with the silhouette of the building has a characteristic appearance that is almost the same as the local regional Architecture. Furthermore, the strengthening of human circulation relationships and the patterns of circulation of goods between the two locations by the River, with the bridge and the river crossing which has its own character. The linkages on urban area can be seen at figure 7 below:



Source: (Sudlo 2012)

Figure 7: Linkages view of silhouette on the building and establish linkages in circulation

#### An Idea

Idea emerging from observations that a MegaStructure building over the river that has multiple functions as a place for the community in the development of economic activities, so that the potential for increased value can take place properly. In case refer from Paul Rudolph as Architect the best model that he have found is Bridge in Florence and old London bridge as urban ancestor of megastructure. An Idea also from lower Manhattan Expressway project by Paul Rudolph, 1970, that can be seen at figure 8 below:



Source: (Banham, 1976)

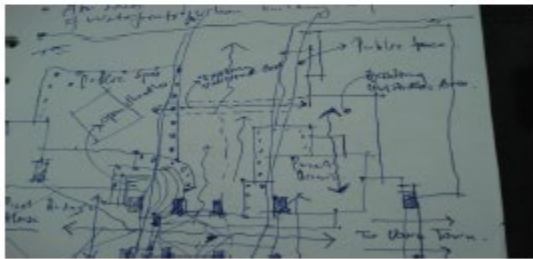
Figure 8: An Idea also come from the best model lower Manhattan Expressway project and urban ancestors of mega structure

An idea that proposed model that founded for understanding the megastructure visually, can be seen at figure 9 until 14 below:



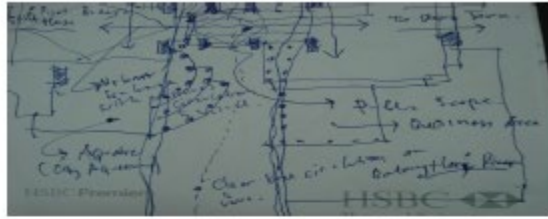
Source: (Sutisno, 2012)

Figure 9: An Idea model of site plan mixed building above the river



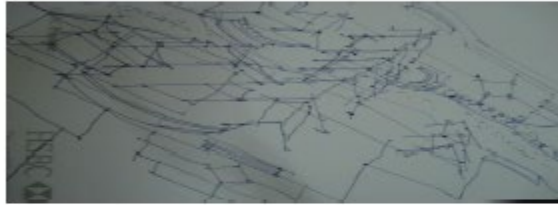
Source: (Sutisno, 2012)

Figure 10: An Idea model of site plan mixed building near at banks the river



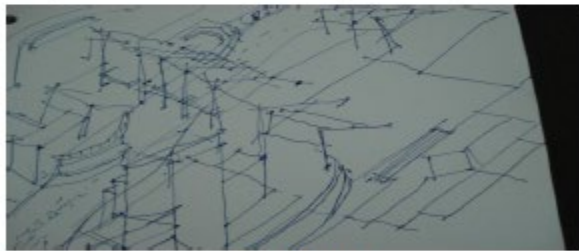
Source: (Saxo, 2012)

Figure 11: An Idea model of site plan mixed building near at diother side of banks the river



Source: (Saxo, 2012)

Figure 12: An Idea model of the form mixed megastructure building above the river



Source: (Saxo, 2012)

Figure 13: An Idea model of the form mixed megastructure building above the river at an other side



Source: (Suzki, 2012)

Figure 14: An Idea model of the form mixed megastructure building above the river at side

#### The Nature of Megastructure

The nature of megastructure have a large frame in which all the function of a city, it has been made by present day technology like a reinforced concrete for a structure with a great size that the platform of the structure must be over from the rising water level of the river and form like a still house for also reference to the local wisdom. Its seemingly unlimited length, able to constructed with modular units and capable unlimited extension that can be build prefabricated ( Banham, 1976:8).

In the presentday may this ide like an utopian project, but if we discussion more about development of place that can be impact included urban linkaged (the visual and circulation ) and economic implication, that will increase the local income for Jambi Province.

#### 5. Conclusion

An environmental impacts that occur, on the area of the River waterfronts in the town of Jambi to get attention, both positive and negative impacts of impacts that occur. From the aspect of economic value added needs to be constantly improved as it pertains to an increase in welfare of society around the banks of the River. Elements of the development area in the city of Jambi River waterfronts continues to have thematic on the banks of the River Waterfronts Area so that the uniqueness of the area will continue. The level of authenticity of the area waterfronts, will greatly affect the characteristics of the region and the influence of sustainable design. As for functions and activities can continue to be managed properly, so that the population growth and economic growth can be controlled, in accordance with spatial support power of the city.

The still home residential area relationship with elements of the development of the banks of the River in the town of Jambi, need special attention, because of the existence of the still home could be made an icon of the city of Jambi. View of the interconnectedness of the silhouette of the building will make the unity of the city structure and interconnectedness of circulation and connectivity between one area and the area that has the potential and economic value that can increase the potential of tourism of the city of Jambi. The idea of building a megastructure with mixedused function can become an icon of the potential of economic aspects and sustainable tourism attraction.

An Idea model of the form mixed megastructure building above and the banks of the river can be superior that make economic growth can be increases, in accordance with spatial support for sustainable of the Jambi city.

#### References

- Breen, Ann & Rigby, Dick. (1982) " WATERFRONTS: Cities Reclaim Their Edge". New York: Mc Graw Hill, Inc.
- Banham, Reyner. (1976). Megastructure, Urban Futures of the Recent Past, London: Thames and Hudson Ltd.
- Bangs, Burhan. (2004). Metodologi Penelitian Kualitatif, Alfabeta Metodologi ke Ansh Eugen Varlen Kontemporer. Jakarta: PT RajaGrafindo Persada.
- F DK Ching. (1984). ARSITEKTUR: Bentuk Ruang & Sasarananya, Jakarta: Erlangga.
- Gallon, Arthur B & Basser, Simon. (1994). Pengantar Perancangan Kota, Desain dan Perencanaan Kota, Edisi Ke II Jilid 1 dan 2. Jakarta: Penerbit Erlangga.





ISBN: 978-602-17519-0-9

CHAPTER ONE 2012  
THE INTERNATIONAL CONFERENCE  
ON CLIMATE CHANGE AND LOCAL WISDOM  
LIVING IN HARMONY WITHIN OUR BUILT ENVIRONMENT

Hedman, Richard & Jacobsen, Andrew. (1984). *Fundamentals of Urban Design*. Washington, D.C: Planners Press  
American Planning Association.  
Ikhsanuddin.(2005). *Menanggapi Pemikiran Postmodernisme dalam Arsitektur*. Yogyakarta: Gadjah Mada University Press.  
Richardson, Vicky. (2001). *NEW VERNACULAR ARCHITECTURE*. London: Laurence King Publishing.  
Torre, L.Azaa. (1999). *"Waterfront Development"*. New York: Van Nostrand Reinhold.